

## SENSOR SWITCH

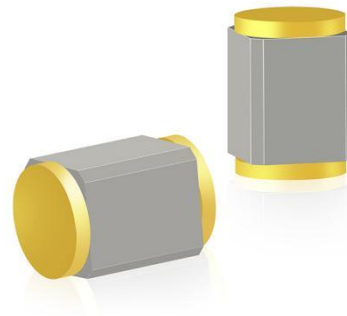
Item No.	CSX-SEN-350A	Description	TILT SWITCH	Version	1
Page	1 of 5		Date	Jun. 14, 2018	

- FUNCTIONS

1. Horizontal Tilt Detecting
2. Vertical Rotation Detecting
3. Shock Detecting

- APPLICATIONS

1. S creen Rotation
2. Web Camera
3. Alarm System
4. Iron Position Detecting
5. Bicycle lights flashing
6. Step Counter
- 7.e-cigarette.



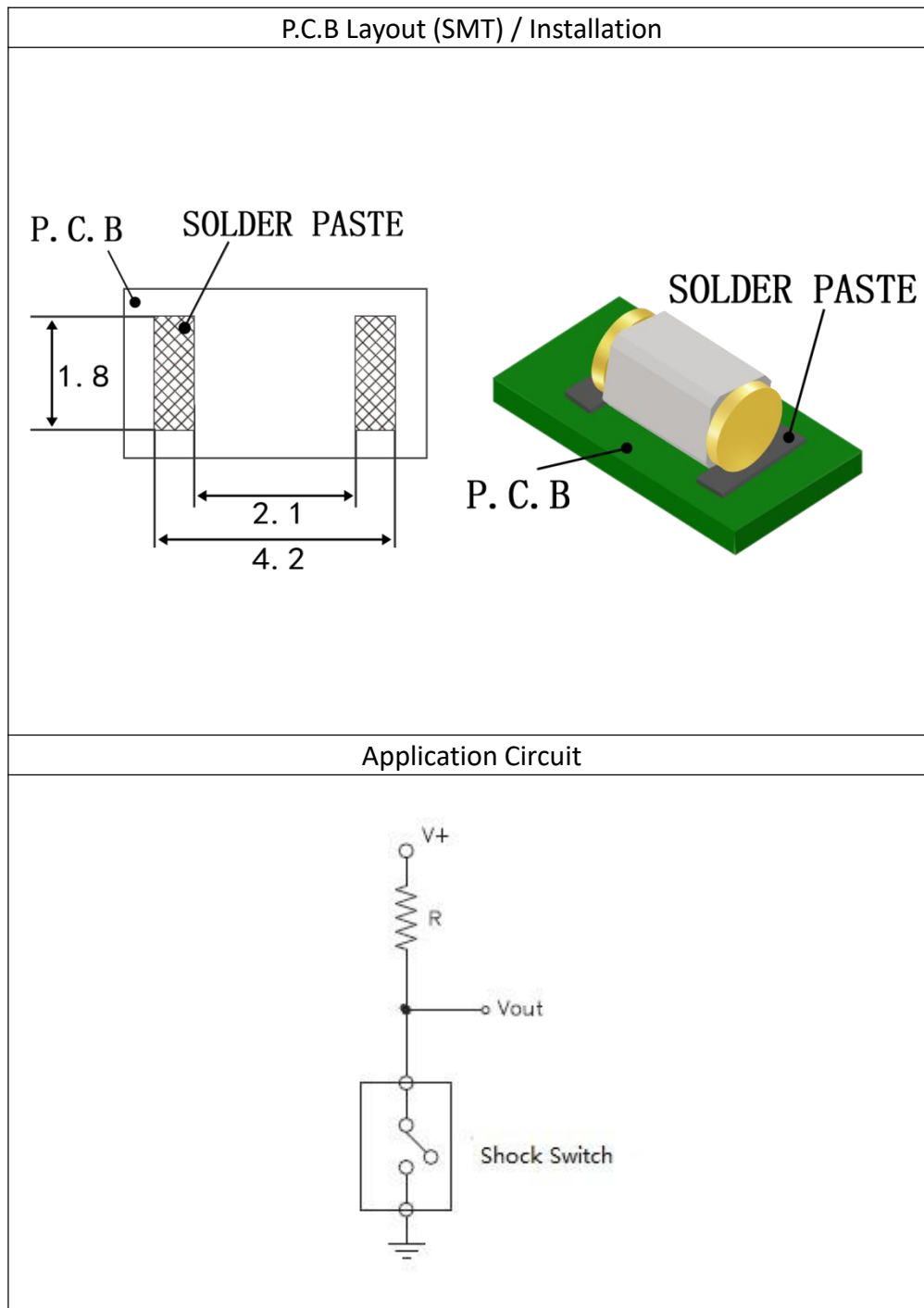
- DIMENSIONS / OPERATION

CSX-SEN-350A	Tilt Detecting

## SENSOR SWITCH

Item No.	CSX-SEN-350A	Description	TILT SWITCH	Version	1
Page	2 of 5		Date	Jun. 14, 2018	

- P.C.B LAYOUT (Unit: mm, Tolerance:  $\pm 0.1$  mm)



## SENSOR SWITCH

Item No.	CSX-SEN-350A	Description	TILT SWITCH	Version	1
Page	3 of 5		Date	Jun. 14, 2018	

- Current / Voltage Suggested

Input Current (mA)	Operating Voltage (V)	Condition
< 10	0.5~12	--

- ELECTRICAL CHARACTERISTICS

1	Insulation Resistance	1,000 M $\Omega$ min., 100V DC
2	Dielectric Strength	500 V DC min. for 1 minute
3	Capacitance	5 pF Max.
4	Average Conductive Rate	98% min.

- RELIABLE TEST ITEMS

Test Item	Contents
IR Reflow	Peak temp. = 260 $^{\circ}$ C *2 times
Operating Temperature	-25 $^{\circ}$ C ~85 $^{\circ}$ C
Storage Temperature	-40 $^{\circ}$ C ~85 $^{\circ}$ C
Humidity	40 $^{\circ}$ C / 95% RH
Mechanical Life	2 Hz, horizontal 5,000,000 times
Electrical Life	5,000,000 times

## SENSOR SWITCH

Item No.	CSX-SEN-350A	Description	TILT SWITCH	Version	1
Page	4 of 5		Date	Jun. 14, 2018	

- SOLDERING CONDITION

Following soldering conditions are for reference only, please use soldering information that solder paste manufacturer recommends.

Condition Operation Method	Soldering Temperature	Soldering Time	Wattage of Manual Soldering	Suitable Production Process
IR Reflow	260±5 °C	< 5 seconds max.	--	SMT
Manual Soldering	320±5 °C	< 3 seconds max.	20 W or Temperature-controlled manual soldering	DIP、SMT

- PACKAGE

Part Number	Package	Quantity
CSX-SEN-350A	Tape & Reel	2,500 pcs

## SENSOR SWITCH

Item No.	CSX-SEN-350A	Description	TILT SWITCH	Version	1
Page	5 of 5		Date	Jun. 14, 2018	

## ● FEATURES

1. Suitable for horizontal PCB.
2. Switch state: SMD Normal Open.
3. Tiny size, suitable for small space
4. Gold-plated ball and terminals, low possibility of oxidization.
5. Simple ON and OFF signals, easy for design.
6. RoHS compliance, an ideal substitute for mercury switch.
7. A more economical tilt detection option than IC design solution.
8. All made in China and examined before shipment.

## ● NOTE

1. Suggestion for usage : For vibration usage or application, we suggest to add hysteresis for IC.
2. For the continued product improvement as one of the company policy, specifications may change or update without notice. The latest information can be obtained through our sales offices. Normally, all products are supplied under our standard conditions.

## ● PRECAUTIONS FOR USE

1. If the product is intended to be used for other endurance equipment requiring higher safety and reliability such as life support system, space and aviation devices, disaster and safety system, it's necessary to make verification of conformity or contact us for the details before using.
2. Do not try to clean the switch with a solvent or similar substance after the soldering process.
3. Use water-soluble flux may damage the switch.
4. If soldering temperature exceeds our specification, sensor switch could get apart.
5. Do not use switch in the environment of high humidity, because such an environment may cause the leakage current between the terminals.
6. More than the rated load may cause fire, so do not use more than the load.
7. In the circuit, switch should not be near or directly connected with the magnetic component solder joints(for example: relays, transformers, etc.).